

**GUARANTEED DEPARTURE**  
¥ 160,000 pp \*JRP NOT included



# AUTUMN SPECIAL

ESSENTIAL JAPAN ON A BUDGET

Discover the iconic cities and the awe-inspiring natural beauty of Japan on a splendid 10-day tour that won't break the bank. Stop off in spectacular Tokyo, experience the serenity of Mount Fuji, and bask in the aching beauty of Kyoto at the Fushimi Inari Shrine, before losing yourself in the bustle of the Dotonbori district in trendy Osaka – the country's culinary capital

## DEPARTURES

Jet off during the most popular seasons

Tour guaranteed for just one guest on all departure dates

5th November & 12th November 2022

HANKYU TRAVEL DMC JAPAN

+81 3 6745 7357

[hankyu-campaign@hei.hankyu.co.jp](mailto:hankyu-campaign@hei.hankyu.co.jp)

<https://www.hankyu-travel.com/english/>



## Inflation-busting prices |

Although Japan can sometimes be quite expensive, we've worked hard to put together a fantastic tour at an affordable price. This will help savvy travellers in these times of global economic difficulty - without scrimping on any of the best tourist hotspots. Your trip includes comfortable three-star hotels throughout.

## See Japan's best cities |

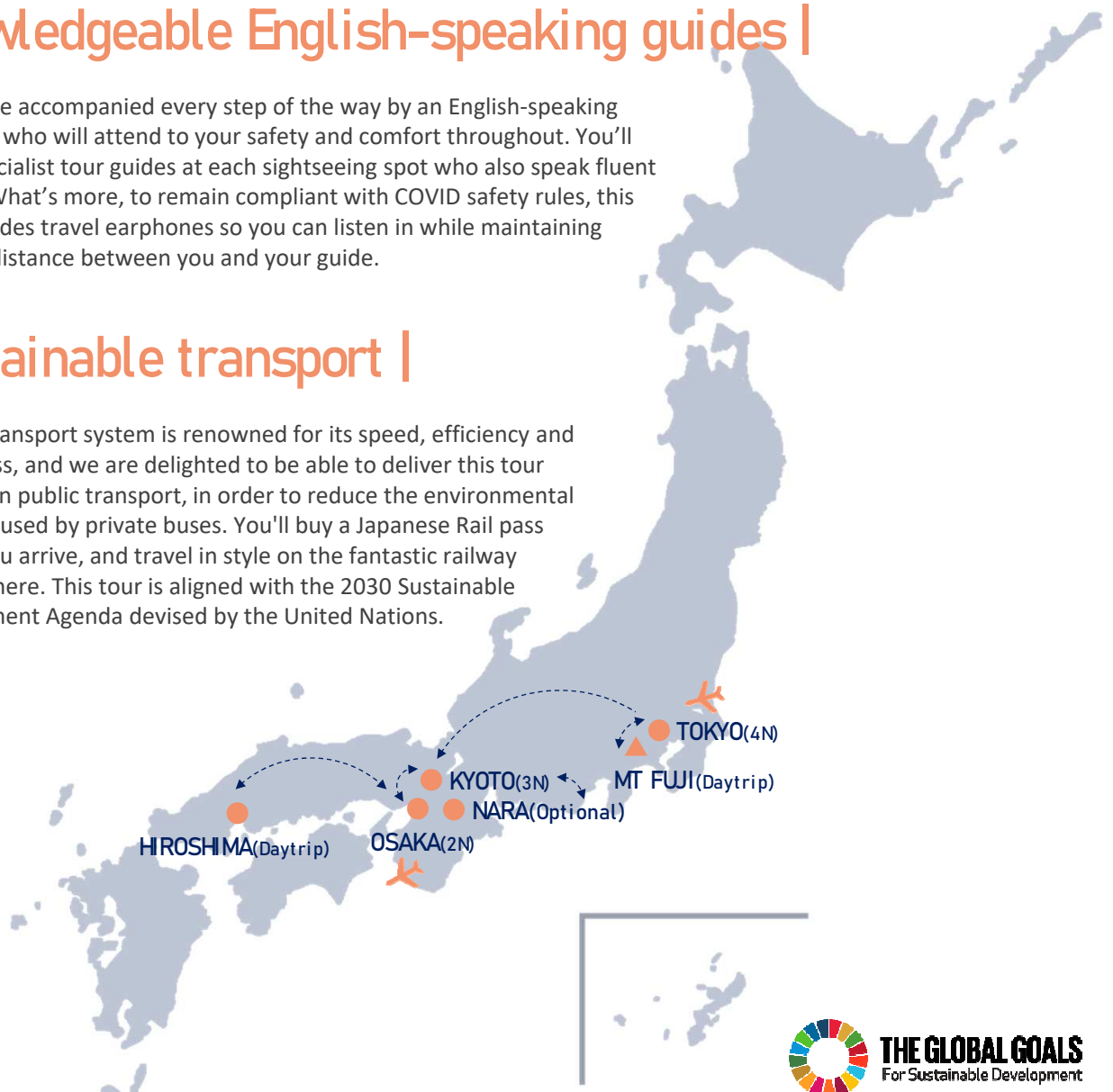
This tour will take in some of the most important and famous cities in Japan. You'll be dazzled by the futuristic technology of Tokyo, and spoiled for choice by the tasty street food in Osaka. You can then uncover the secrets of the ancient capital Kyoto, and learn all about the sombre history of Hiroshima.

## Knowledgeable English-speaking guides |

You will be accompanied every step of the way by an English-speaking assistant, who will attend to your safety and comfort throughout. You'll meet specialist tour guides at each sightseeing spot who also speak fluent English. What's more, to remain compliant with COVID safety rules, this tour includes travel earphones so you can listen in while maintaining physical distance between you and your guide.

## Sustainable transport |

Japan's transport system is renowned for its speed, efficiency and cleanliness, and we are delighted to be able to deliver this tour entirely on public transport, in order to reduce the environmental impact caused by private buses. You'll buy a Japanese Rail pass before you arrive, and travel in style on the fantastic railway network here. This tour is aligned with the 2030 Sustainable Development Agenda devised by the United Nations.



# 10 DAY ITINERARY

## DAY 1 | WELCOME TO TOKYO

You'll touch down at one of the capital's two major international airports and make your own way to your first a comfortable three-star hotel in an enviable central location, for a good night's sleep before the tour starts in earnest tomorrow.

- **Accommodation:** Comfort Hotel Tokyo Higashi Kanda (or another hotel of similar quality)



## DAY 2 | EXPLORING THE METROPOLIS

Welcome to Tokyo! Today you'll experience a full-day tour of this amazing world city. Your guide will escort you through Tokyo's famous public transport system to see diverse sites including the Meiji Shrine, the bustling Shibuya Crossing, the Nakamise Shopping Arcade, the stately Asakusa Kannon Temple, and the regal Imperial Palace Plaza.

- **Accommodation:** Comfort Hotel Tokyo Higashi Kanda (or similar)
- **What's included:** Breakfast, Tokyo tour guide, public transport around Tokyo



## DAY 3 | HISTORIC VIEWS OF MT FUJI

After a short rail journey from Tokyo to Otsuki using your JR pass, you'll enjoy a full-day tour to Kawaguchiko, a beautiful lake right at the base of Mount Fuji where, on a clear day you will be able to see the very top of Japan's iconic mountain from the water. There are unrivalled views of the mountain that dominates the skyline for miles around from the Mt Kachikachi ropeway, 1,000m above sea level. We've included a visit to the pagoda at Arakurayama Sengen Park, which has perhaps the most famous view of Mt Fuji of all.

- **Accommodation:** Comfort Hotel Tokyo Higashi Kanda (or similar)
- **What's included:** Breakfast, Kawaguchiko tour guide, return bus between Otsuki and Kawaguchiko, lake cruise and ropeway tickets



## DAY 4 | A FREE DAY IN TOKYO

Today is set aside for you to explore Tokyo at your own pace, exploring museums, galleries, markets and famous neighbourhoods with your JR pass. There are far too many incredible things for us to describe here, but perhaps you'll enjoy the futuristic man-made island of Odaiba, with its fantastic views of Tokyo Bay, or the historic Ginza, Japan's premier shopping district.

- **Accommodation:** Comfort Hotel Tokyo Higashi Kanda (or similar)
- **What's included:** Breakfast



## DAY 5 | THE ANCIENT CAPITAL

Today we say goodbye to Tokyo and catch a Bullet Train (using your JR pass) to historic Kyoto for a half-day tour of just a few of its most famous sites. You'll stroll between the Torii gates at the Fushimi Inari Grand Shrine and step back through time at Sanjusangendo, an 850-year-old temple which contains 1,001 statues of Kannon, the Buddhist goddess of mercy.

- **Accommodation:** Urban Hotel Kyoto-Shijo Premium (or similar)
- **What's included:** Breakfast, luggage transfer (one suitcase per person), Kyoto tour guide, public transport around Kyoto, entry to Sanjusangendo



## DAY 6 | EXPLORATIONS IN KYOTO

Wake up in Kyoto for a full day immersing yourself in this stunning ancient city. Your guide will escort you around Nijo Castle, the former formal residence of the Shogun, with its nightingale floors and sumptuous original decorations. You'll take in the Heian Shrine, a popular shrine known for its festivals, as well as the Yasaka Shrine and Gion, which is Kyoto's most famous historic Geisha district, whom you may glimpse in the evening, hurrying to their engagements.

- **Accommodation:** Urban Hotel Kyoto-Shijo Premium (or similar)
- **Meals included:** Breakfast, Kyoto tour guide, entry to Nijo Castle and the Heian Shrine, public transport around Kyoto



## DAY 7 | A FREE DAY IN KYOTO

You get to decide the itinerary today, with a whole day free to explore whichever parts of Kyoto that excite you most. Perhaps you'll stroll around Kinkaku-ji Temple, which is known as "the Golden Pavilion" as its walls are covered in a rich gold leaf, or Tenryu-ji Temple and its beautiful gardens, and the serene Arashiyama Bamboo Forest. You may also opt into a half-day tour of nearby Nara, with visits to Todai-ji Temple, the Kasuga-taisha Grand Shrine and Nara Deer Park, and many other treasures at this sprawling UNESCO World Heritage site.

- **Accommodation:** Urban Hotel Kyoto-Shijo Premium (or similar)
- **What's included:** Breakfast
- **Optional extra:** Nara tour, including return train tickets, tour guide



## DAY 8 | COOLING OFF IN OSAKA

Osaka is Japan's second city, not far from Kyoto on public transport with your JR pass. On your tour, you'll visit Osaka Castle (from outside), built in 1583, and sample some of Japan's tastiest tidbits in the foodie quarter of Dotonbori. You'll take in the dazzling lights that line the canals and draw visitors towards karaoke bars, shellfish restaurants and late-night ramen joints.

- **Accommodation:** Shin-Osaka Esaka Tokyu REI Hotel (or similar)
- **What's included:** Breakfast, Osaka tour guide, same-day luggage transfer



## DAY 9 | A DAY FOR REFLECTIONS

Today brings you on a full-day tour of Hiroshima and the nearby holy island of Miyajima – roughly 90 minutes by train from Osaka with your JR pass. Here you'll learn all about the tragedy of the Second World War at the Peace Memorial Park, where you can contemplate the haunting ruins of the Atomic Bomb Dome, a lone building that survived a deadly blast. On Miyajima, you'll visit the spectacular and spiritual Itsukushima Shrine.

- **Accommodation:** Shin-Osaka Esaka Tokyu REI Hotel (or similar)
- **What's included:** Breakfast, Hiroshima tour guide, entry to the Peace Memorial Museum, Itsukushima Shrine, Miyajima ferry



## DAY 10 | BACK TO OSAKA

Your last day in Japan affords you another chance to explore Osaka at your leisure. Whether that means visiting the museums, taking in a view of the whole city from the Tempozan Ferris Wheel, or picking up souvenirs at Tenjinbashi-suji, the longest shopping street in Japan, is up to you - but the possibilities are endless. Once the day is done, you'll make your own way to KIX Airport and catch your flight back home.

- **What's included:** Breakfast



# TOUR PRICES

Tour rate (Minimum participants: One person. Maximum participants: 30 people)	¥ 160,000 per person
Single Supplement (Single room)	¥ 20,000 per person
Optional tour: A half-day in Nara (Includes guide, entrance to Todai-ji Temple, Kasuga-Taisha Grand Shrine, and Nara Park) Minimum participants: 10 person	¥ 10,000 per person

## TOUR INCLUDES

Accommodation: Nine nights based on half-occupancy of a twin room in three-star hotels | Meals: Nine breakfasts, no lunches or dinners | Tickets: For all trips and visits mentioned in the itinerary | Luggage: By courier service from Tokyo to Kyoto on Day 5, Kyoto to Osaka on Day 8 | Additional luggage costs ¥3,000 per item | Travel: All conducted via public transport, as mentioned in the itinerary | Guide: An English-speaking assistant will accompany you for the whole trip (except free day, free time and the train between Tokyo and Kyoto) and you'll meet English-speaking tour guides at each sightseeing spot

## TOUR DOES NOT INCLUDE

Flights: Neither international nor domestic flights | Travel: You must purchase a seven-day Japan Rail Pass in Europe before you arrive, for use between Day 3 and Day 9. Our European branches will be happy to assist you here | Insurance | Luggage: Porter services at the airport or hotel | Transfers: Transfers to or from the airport | Other expenses: Personal expenses or other items not mentioned in the itinerary

### Tour conditions

- Reservations can be made up to 21 days before the date of departure
- If the minimum number of participants (one) is not met two months before the scheduled departure date, the tour may be cancelled
- Full payment is required a week before the departure date, or the booking will be cancelled

### Cancellation conditions

- 21 days or more before departure date: 0% of fee
- 20 to 14 days before departure date: 10% of fee
- 13 to seven days before departure date: 30% of fee
- Six to three days before departure date: 50% of fee
- Two days or less before departure date: 100% of fee

### Notes

- The tour will begin in your hotel lobby on the second day at 8:30am. Please make sure to arrive in Japan on or before the previous day
- Twin room size shall be at least 15sqm, and single room size will be at least 10sqm
- Sightseeing tours are walking tours
- Colored leaves sightings are never guaranteed, as the date they bloom changes each year
- Mt Fuji may not be visible due to weather conditions beyond our control
- Schedules, sightseeing spots, and the order of visits is subject to change due to traffic conditions, weather conditions, and other local conditions
- Breakfast may be served as a set menu instead of a buffet style
- Breakfast may not be available depending on the time of the return flight on the last day. There will be no refund in this case
- This is not a private tour, and you will be joined by other guests
- If trains are crowded at particular times, you may not be able to sit next to your companions
- The bus transfer to Kawaguchiko on day 3 may be shared with passengers of other nationalities.